

---

# New Graduate Student Guide

---

Essential information and  
resources from the Graduate  
School and its partners to support  
you as a graduate student.

If you have any questions, please contact us at [gradstudentsuccess@oregonstate.edu](mailto:gradstudentsuccess@oregonstate.edu).

Please use our website to find additional resources and professional development opportunities beyond this guide at <http://gradschool.oregonstate.edu/graduate-student-success>.

Every graduate program also provides a student handbook. Please use your home department's or program's website to find links to your student handbook to find department or program specific information.

---

# Contents

## ID card and online accounts — 8

[OSU ID card](#)

[How to get your ID card](#)

[ONID account](#)

[OSU Google account](#)

[Computer and account help](#)

[OSU alerts and emergency management](#)

# Transportation and parking — 11

SafeRide

OSU beaver bus - Corvallis campus bus

City of Corvallis bus

HUT shuttle

Parking and permits

# Housing options — 13

On-campus housing

Students with families

Off-campus housing

# Registering for classes — 15

How to register for classes

Registration holds

Tuition and other mandatory fees

## **Academic resources — 19**

Path to graduation

Graduate Student Success Center (GSSC)

Graduate Writing Center

The Valley Library

Academic Success Center

Student computing facilities

## **Research resources — 24**

Institutional Review Board (IRB)

The Valley Library

## **Financial resources — 26**

Graduate Assistantships

Fellowships and Scholarships

## **Graduate students and teaching — 28**

Graduate Certificate in College and University Teaching (GCCUT)

Center for Teaching and Learning

CIRTL

## **Professional development — 30**

Career preparation

Three minute thesis (3MT) competition

## **Equity, Inclusion and Diversity — 32**

Our vision

Office of Institutional Diversity

Difference, Power and Discrimination Program

Equal Opportunity and Access

Disability Access Services

Campus Civility and Inclusivity Campaign

Cultural resource centers

SOL: LGBT multicultural support network

Social Justice Retreats

Men's Development & Engagement

## **Health and wellness — 39**

Student Health Services (SHS)

Health insurance

Counseling and Psychological Services (CAPS)

University Ombuds office

Sexual Assault Support Services (SASS)

Survivor Advocacy and Resource Center

Human Services Resource Center (HSRC)

Military and Veteran Resources

## **Sports and recreation — 45**

Recreational sports

OSU intramural sports

## Student life — 46

[Coalition of Graduate Employees \(CGE\)](#)

[Graduate student trips](#)

[Childcare and family resources](#)

[Graduate student clubs](#)

## Graduate school policies — 48

[Continuous enrollment](#)

[Leave of absence](#)

[Program of study](#)

[Graduate committee and GCR](#)

[Scheduling your required exams](#)

[Student conduct code](#)

# ID card and online accounts

## OSU ID card

On campus, the ID card is used for meal plans, [Orange Cash](#) (save 10% on food purchases), copy card, getting into the gym and more. Off campus, many businesses give discounts to students with an ID card.

## How to get your ID card

Go to the ID Center in the Memorial Union Room 103, or [upload a photo online](#) (requires your ONID account) and have your card waiting for you. You will need photo ID (valid driver's license, state ID card, military ID, passport or resident alien card) to pick up your OSU ID card. Your first ID card is \$20, charged to your student account; replacement cards are \$25.

### [Student ID Center](#)

Memorial Union Room 103

Monday – Friday 8:30 a.m.–4:30 p.m.

541- 737-2493



[id.center@oregonstate.edu](mailto:id.center@oregonstate.edu)

## ONID account

OSU Network Identification (ONID) is a universal computer account available to all OSU students. Your ONID username and password gives you access to university technology services, [the wireless network](#), [ResNet](#), [IS computer labs](#), and [the Interlibrary Loan](#). ONID also gives you an OSU Gmail account. OSU requires you communicate via your ONID email.

[Sign up for your ONID account](#)

You need your OSU ID number to sign up for your ONID account.

## OSU Google account

Students' ONID mailboxes are hosted at Google Apps for OSU, and all email sent to your ONID email address (username@oregonstate.edu) is delivered to Google Mail. [Use Google Apps for OSU login portal to access your ONID email and other Google services like Google Drive.](#)

Your program may also create an additional email account for you called an Exchange

account. [You can set your ONID account to forward to exchange account](#) if you have one.

## Computer and account help

The OSU Computer Helpdesk provides computer and device support to OSU faculty, staff, and students for free. If they can't resolve an issue, they can direct you to the correct support group.

The OSU Computer Walk-Up Helpdesk provides students and employees with quick and completely free in-person help with your software, laptop, and mobile device issues. The Helpdesk staff are also able to do non-invasive computer troubleshooting and minor hardware replacement (hard drives, memory, and optical drives).

### [OSU Computer Helpdesk](#)

The Valley Library, Main Floor

Sunday - Friday 10:00 a.m.-10:00 p.m.

Saturday - 10:00 a.m.-10:00 p.m.

541-737-3474

## OSU alerts and emergency management

To receive OSU alert notifications, login to your RAVE account and update how you want to receive your alerts. OSU encourages you to add a text capable device to receive an urgent message if an incident is under way.

[Sign up for OSU alerts.](#)

## Transportation and parking

There are many transportation options on the Corvallis campus. [Visit the transportation website to learn your options.](#)

### SafeRide

SafeRide is a service dedicated to providing safe rides home or to campus. SafeRide operates throughout the Corvallis and Philomath communities. It is open to all OSU students on the Corvallis campus. Before requesting a ride, please review the policies, boundaries, and hours of operation. Open seven days a week, with an exception of major United State holidays, and OSU holiday breaks.

[ASOSU SafeRide](#)

110 [Student Experience Center SEC](#)

Sunday- Monday 6:00 p.m.-2:30 p.m.

541-737-5000

[saferride.external@oregonstate.edu](mailto:saferride.external@oregonstate.edu)

## OSU beaver bus – Corvallis campus bus

[The Beaver Bus](#) is a free campus shuttle to transport students, employees and visitors from outer parking areas to and around the Corvallis campus.

Monday – Friday 7:00 a.m.-7:00 p.m.

## City of Corvallis bus

The Corvallis Transit System (CTS) operates the bus system to help you commute in Corvallis. The bus is free to ride and runs from Monday-Saturday. [Check the bus schedules.](#)

A barcode is present at every bus-stop in Corvallis. Scan the barcode with your mobile device to know the estimated time of arrival for that stop.

[The Night Owl](#) city bus runs from 8:45 p.m.-2:15

a.m. on Thursday, Friday, and Saturday.

## HUT shuttle

Many students, faculty and staff use the HUT Shuttle to get to the Portland Airport. The HUT Shuttle picks up on the Corvallis campus and has free Wi-Fi. The HUT operates 24/7 and [reservations can be made online.](#)

## Parking and permits

Permits are required for all vehicles parked on campus, except during open periods and in metered spaces. You can [buy a parking permit](#) at a permit kiosk, online, or at the Parking Services office.

### [Parking Office](#)

100 Adams Hall

Monday – Friday 7:30 a.m.-4:30 p.m.

541- 737-2583

## Housing options

### On-campus housing

All residence halls are open to graduate students, but many people choose to live within halls that are either partially or fully set aside for sophomore and above, transfer, and graduate students.

Bloss Hall is home to a new community only for graduate students on the top (7th) floor. It is not a first-year resident building or floor. Single rooms available, or double rooms as single (private) spaces. Essentially, a student can choose to have a double room as a single, at the single room rate (quite a deal!)

Halsell Hall is exclusively for sophomore and above students. It offers suite rooms, with four single or two double bedrooms sharing a common area with kitchenette, living room, and one-and-a-half bathrooms.

### [University Housing & Dining Services](#)

Oxford House  
957 SW Jefferson Street  
541-737-4771

[Email UHDS](#)

## **Students with families**

Living at [Orchard Court](#) provides a unique opportunity to live in a diverse multicultural

community with other families from throughout the world. Currently 65% of our student families are from countries other than the United States, and more than 70% of the student residents there are graduate students. Orchard Court has a friendly, inviting atmosphere, making it a good place for you and your family to call home.

Please note that due to the demand for family housing the wait list can be more than 1 year at a time, so be sure to apply as early as possible!

[Family Housing](#)

541-737-4771

[Send Email](#)

## Off-campus housing

University Housing and Dining Services offers valuable information when considering [off-campus housing](#).

[The Barometer's Renter's and Home](#)

[Improvement Guide](#) is also a good source of information for renters.

## Registering for classes

# How to register for classes

You can check the [general catalog and schedule of classes website](#) for subject descriptions before you register for classes.

To know when registration starts for each term [go to MyOSU](#).

Click on Student tab and under Registration Tools, select 'View Priority Registration Status'. Graduate students will be able to register at the beginning of priority registration.

Registration status will be available approximately one week before registration begins.

You can add/ drop courses till the priority registration end period. [Check the academic calendar for more information](#).

Using the online schedule of classes, you can search course listings in several ways. [Login to MyOSU](#).

Click on OSU Online Services

In the Main Menu, click on Registrations

Click on Select Term



Select the term you want to enroll for

Click on Registration/Add/Drop Classes

Find “Add Class Worksheet”. Click on Class Search to search for your classes.

Select the courses you want to enroll and click add to worksheet. Then select submit under the worksheet section to register.

## **Registration holds**

When you attempt to register, the registration system will inform you of any registration holds that you have. Students with registration holds are not permitted to register until holds are cleared. Contact the appropriate departments and offices to remove holds. The registration system will provide you this information.

## **Tuition and other mandatory fees**

To maintain your registration ability for each term, you must keep your finance account in good standing. View your bills under the online services using MyOSU. You can pay your tuition

and bills electronically by using your student ID. OSU accepts wire transfers of funds as payment. [You can find the instructions and a copy of wire transfer form here.](#)

### [Student Billing](#)

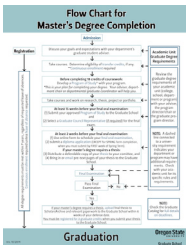
100 Kerr Administration Building  
Monday- Friday 8:30 a.m.-4:30 p.m.  
541-737-3775

*Continued on next page*

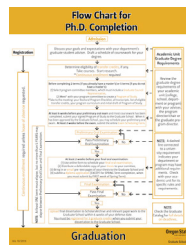
# Academic resources

## Path to graduation

Please download and refer to one of our graduate degree flowcharts (also available in our office), which outline the journey you take to earn a graduate degree at OSU.



[Master's flowchart](#)



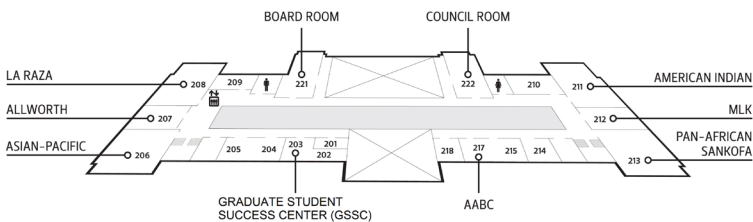
[Ph.D. flowchart](#)

## Graduate Student Success Center (GSSC)

The GSSC is a student-led initiative that provides space and resources to graduate students. The GSSC offers a comfortable space to relax, with a reservable meeting rooms, computers and printing. The Graduate School,

Graduate Writing Center, and the IRB hold drop-in hours there. Stop by the Memorial Union room 203 and check out your space!

Second floor of the Memorial Union, room 203



## Graduate Student Success Center

Memorial Union 203

The GSSC is open when the MU is open

Monday – Thursday: 7:00 a.m.–11:00 p.m.

Friday: 7:00 a.m.–midnight

Saturday: 7:30 a.m.–midnight

Sunday: 10:30 a.m.–11:00 p.m.

[gssc@oregonstate.edu](mailto:gssc@oregonstate.edu)

## Graduate Writing Center

Graduate Writing Center is a support service for the graduate students. It helps you to function effectively, efficiently and confidently in an academic environment.

The writing assistants are skilled readers and writers who can help you work on a project

by assisting you to revise, brainstorm and can also help with grammar, citing sources and formatting.

[Click here to make appointment for writing help.](#)

Graduate Writing Center walk-in hours are hosted at the Graduate Student Success Center in the Memorial Union 203. [Please check the Graduate School calendar to find out when the next drop-in hours are held.](#)

The Online Writing Lab (OWL) provides online writing consulting for students. [Click here to get conected online.](#)

Graduate Writing Center  
Waldo 123  
Mon - Fri 9:00 a.m.-4 p.m.  
Walk-in 9:00 a.m.-3:30 p.m.  
541-737-5640

## The Valley Library

The Valley Library provides an environment for individual study as well as collaborative work.

You can reserve a room for study purposes in the library using your student ID. Presentation

rooms are also available for graduate students.

You can borrow books, laptops, headphones, calculators, white board markers and much more at the circulation desk located on the second floor of the library. Scanners, printers, and copiers are available throughout the building.

[Student Multimedia Services \(SMS\), located in the library, offers a host of services for graduate students.](#) The SMS is a student-initiated multimedia unit available for use all for currently enrolled students of OSU. It provides multimedia facilities, equipment and technical support for students producing and presenting academic work.

The SMS allows you to print two free copies of your thesis, dissertation, or final project. Graduate students can also print a poster one free poster per assignment or conference. The SMS can loan graduate students laptops, camera, video and audio equipment.

The Valley Library offers graduate student and faculty workshops each term. Topics include data management, citation management and more. [Check the current schedule.](#)

Each college has its own librarian to help students with research and other questions specific to their field of study. [See a list of librarians by college.](#)

[The Valley Library](#)

541-737-3331

[Library hours](#)

[Ask a Librarian](#)

## Academic Success Center

The Academic Success Center provides tutorials to help students manage time, achieve balance, set goals and more. [Check out their Learning Corner for resources.](#)

[Academic Success Center](#)

102 Waldo Hall

Monday - Friday 8:00 a.m.-5:00 p.m.

541-737-2272

[Send Email](#)

The Academic Success Center also operates the [Beth Ray Center for Academic Support \(BRC\).](#) The BRC provides study space for individuals and groups and a computer lab.

Beth Ray Center for Academic Support  
671 SW 26th St

Monday to Friday 7 a.m.-5 p.m.

541-737-2272

[Send Email](#)

## Student computing facilities

There are various locations for student computers around the Corvallis campus.

Student Computing Facilities provides computers for student use in the Milne Computer Center.

The main floor of the Valley Library offers computers for student use.

Many departments and schools have their computing labs. Visit your department website for more information.

The Graduate Student Success Center also has two computers for students.

## Research resources

As a leading Tier 1 research university, [the Research Office at Oregon State University](#) helps guide OSU's research enterprise. With over \$309 million in external grant funding, OSU is



Oregon's leading research university.

The Research Office's [Advantage Accelerator](#) can help take your research and ideas to the marketplace.

## Institutional Review Board (IRB)

All research projects involving human subjects must be submitted for IRB review. IRB approval for these projects must be granted prior to the initiation of any study activities, including recruitment or analysis of existing data. If you think your research includes human subjects (including interviews or surveys) please talk to your advisor and contact the [Office of Research Integrity](#).

IRB drop-in hours are held at the [Graduate Student Success Center](#).

## The Valley Library

The Valley Library offers graduate student and faculty workshops each term. Topics include data management, citation management and more. [Check the current schedule](#).

Each college has its own librarian to help the students with research and other questions. [Here's a list of librarians by college.](#)

121 The Valley Library  
541-737-3331

[Library hours](#)

[Ask a Librarian](#)

## Financial resources

Graduate students have several options for financial support in graduate school, including: scholarships, fellowships, teaching and research assistantships, awards, student jobs, and student loans. [Explore your options](#) on our website.

## Graduate Assistantships

As OSU is a teaching and research institution, it follows that the work of our graduate assistants is essential to fulfilling the university's mission. Teaching assistantships (TAs) may include leading a discussion, delivering lectures, grading papers, or supervising a laboratory. Research assistantships (RAs) typically assist faculty in conducting research projects.

In exchange for service, an assistantship provides a monthly salary, tuition remission, and an institutional contribution toward the graduate assistant-only health insurance premium.

Contact your program for more information on possible assistantship positions available.

Other helpful financial contacts:

[OSU Office of Financial Aid & Scholarships](#)

[OSU Office of Student Accounts](#)

## **Fellowships and Scholarships**

Fellowships and scholarships for graduate study are awarded on the basis of academic merit and/or financial need. Fellowships usually provide a stipend and, in some cases, tuition support and a research allowance. Scholarships usually cover direct educational expenses, such as tuition and fees. Some fellowships and scholarships are awarded institutionally, either by the Graduate School or by an academic college, department committee, or graduate program, while others are awarded by external agencies such as the National Science

Foundation.

# Graduate students and teaching

Graduate students are an integral part of teaching at Oregon State University. The teaching responsibilities may vary greatly by discipline, course or the instructor. Graduate Teaching Assistants (GTAs) are encouraged to attend the GTA training held as part of [Grad Welcome Week](#) prior to the start of fall term.

## Graduate Certificate in College and University Teaching (GCCUT)

The 18-credit [GCCUT program](#) is designed to provide careers in teaching and experiential learning opportunities to students who plan to pursue careers in teaching or other fields that may require similar facilitation skills. The certificate is transcript visible and is available on the Corvallis campus or online. The Graduate Certificate in College and University Teaching

is designed to be completed in two years, and may be done in conjunction with a concurrent graduate degree or on its own as a standalone (without an accompanying graduate degree) certificate.

[Graduate Certificate in College and University Teaching](#)

Jessica Beck, GCCUT Director

541-737-8576

[jessica.beck@oregonstate.edu](mailto:jessica.beck@oregonstate.edu)

## Center for Teaching and Learning

The [Center for Teaching and Learning](#) helps faculty, graduate teaching assistants, departments, and colleges achieve professional excellence in teaching and learning by encouraging and facilitating the scholarship of teaching and learning. The CTL offers symposiums several times a year.

[Center for Teaching and Learning](#)

419 Learning Innovation Center

541-737-2816

## CIRTL

Center for the integration of Research,

Teaching, and Learning (CIRTL) is a national program dedicated to enhancing excellence in undergraduate education in STEM fields. As an institutional partner, OSU students, postdocs and faculty have access to online courses, weekly streaming sessions and other opportunities. Check our website for [CIRTL opportunities.](#)

Jessica Beck  
541-737-8576  
[jessica.beck@oregonstate.edu](mailto:jessica.beck@oregonstate.edu)

## Professional development

The Graduate School and its partners provides professional development opportunities throughout the academic year in six keys areas: career, communications, leadership, research, teaching and writing. [Check the website for a complete list of resources and events.](#)

## Career preparation

The Career Develop Center offers career fairs throughout the year. The center also provides

drop-in resume help and other services.

For international students, know your eligibility and conditions under which you are permitted to work in the United States. [Meet with an international advisor if you need more clarification.](#)

[Career Development Center](#)

B008 Kerr Administration Building

Drop-in hours Monday- Thursday 1:00 p.m.-4:00 p.m.

541-737-4085

[career.services@oregonstate.edu](mailto:career.services@oregonstate.edu)

## Three minute thesis (3MT) competition

In spring term, the Graduate School hosts a [3MT competition](#) open to all current graduate students. Competitors have three minutes and a single slide to explain their project and impress the judges. Winners share \$3,000 in prize money and represent OSU at the statewide 3MT competition.

[Three Minute Thesis](#)

Kim Calder

541-737-1456

[kim.calder@oregonstate.edu](mailto:kim.calder@oregonstate.edu)

# Equity, Inclusion and Diversity

## Our vision

Oregon State University aspires to be a collaborative, inclusive and caring community that strives for equity and equal opportunity in everything we do; that creates a welcoming environment and enables success for people from all walks of life; and that shares common, fundamental values grounded in justice, civility and respect while looking to our diversity as a source of enrichment and strength. ([Source](#))

## Office of Institutional Diversity

The Office of Institutional Diversity intensifies the focus on attaining goals related to diversity, equity, inclusion and social justice at Oregon State University. This office oversees institutional change actions, initiatives and communications on these vital issues throughout all facets of the University.



You can report incidences of bias you experience or witness to the Office of Institutional Diversity through [their bias reporting form](#).

The office coordinates the annual [Martin Luther King, Jr. Celebration](#) and hosts [town hall discussions](#).

[Office of Institutional Diversity](#)

Kerr Administration Building, Room B236F  
541-737-1063

## **Difference, Power and Discrimination Program**

The DPD program works with faculty across all fields and disciplines at Oregon State University to develop inclusive curricula that address institutionalized systems of power, privilege, and inequity in the United States. DPD offers workshops, lectures, a graduate level course (GRAD 542), teaching resources, and the DPD Academy, where participants work on revising and/or developing one or more courses, to meet OSU's DPD course criteria.

[Difference, Power and Discrimination Program](#)

Nana Osei-Kofi, Director

316 Waldo Hall

[Email DPD](#)

## Equal Opportunity and Access

Oregon State University's Office of Affirmative Action and Equal Opportunity (now part of the Office of Equal Opportunity and Access) was founded in 1971 to ensure that all university community members uphold federal and state civil rights laws and regulations, as well as university equal opportunity policies. This work continues to be performed by the Office of Equal Opportunity and Access. The office provides training in the following areas: accessibility basics for the web, Americans with Disabilities Act, Disability Access Services training (ebook), search advocate workshop series, sexual harassment prevention, civil rights.

All members of the university community may raise complaints of discrimination, harassment, and bullying with the Office of Equity and Inclusion.

[Office of Equal Opportunity and Access](#)

330 Snell Hall

[Email](#)

# Disability Access Services

DAS at Oregon State University facilitates access to University programs and services for students, faculty, staff and visitors with disabilities through accommodations, education, consultation, and advocacy. [Review the DAS handbook to learn about the services provided at OSU.](#)

In order to ensure you have accommodations in place when you begin classes, we recommend that you submit an application and documentation to DAS immediately after you are admitted to OSU. [Learn more about the documentation requirements.](#)

A200 Kerr Administration Building  
Monday- Friday 8:00 a.m.-5:00 p.m.  
541-737-4098  
[Disability.Services@oregonstate.edu](mailto:Disability.Services@oregonstate.edu)

## Campus Civility and Inclusivity Campaign

Campus Civility and Inclusivity Campaign is committed to nurturing a climate of compassion and inclusivity for all students, faculty, staff and visitors. We envision a

collaborative campus community that enagages civility and embraces diversity.

[Watch the 2-minute film](#) featured by our group to raise awareness around civility and inclusivity, and cultivate an environment of kindness and empathy.

## Cultural resource centers

The Cultural Resource Centers provide an opportunity for all students to learn about various culture, heritage, history, identity, and self-expression in an atmosphere of positive engagement and mutual respect. [See the list of CRCs online.](#)

Asian & Pacific Cultural Center

Monday- Thursday 10:00 a.m.-7:00 p.m.

Friday 10:00 a.m.-5 p.m.

541-737-6361

[Send Email](#)

Centro Cultural Cesar Chavez

691 SW 26th street

Monday- Thursday 10:00 a.m.-7:00 p.m.

Friday 10:00 a.m.-5:00 p.m.

541-737-3790

[Send Email](#)

Ettihad Cultural Center

380 Student Experience Center  
Monday- Thursday 10:00 a.m.-5:00 p.m.  
Friday 10:00 a.m.-5 p.m.  
541-737-1052  
[Send Email](#)

Lonnie B.Harris Black Cultural Center  
100 SW Memorial Place  
Monday- Thursday 10:00 a.m.-7:00 p.m.  
Friday 10:00 a.m.-5 p.m.  
541-737-4372  
[Send Email](#)

Native American Longhouse Eena Haws  
311 SW 26th St.  
Monday- Thursday 10:00 a.m.-7:00 p.m.  
Friday 10:00 a.m.-5 p.m.  
541-737-2738  
[Send Email](#)

Pride Center  
1553 SW Ave  
Monday - Thursday 10:00 a.m.-7:00 p.m.  
Friday 10:00 a.m. to 5:0 p.m.  
541-737-9969  
[Send Email](#)

[Women's Center](#)  
1700 SW Pioneer Place  
Monday - Thursday 10 a.m.-7 p.m.  
541-737-3186

**SOL: LGBT multicultural**

# support network

SOL is a student-initiated collaborative effort to support and improve our campus climate for lesbian, gay, bisexual, transgender, queer, questioning, intersex, and allied (LGBTQQIA) persons of color through counseling, educational programming, advocacy, and ally building among undergraduate students, graduate students, faculty, and staff of Oregon State University. [Learn more about SOL.](#)

Pride Center

1553 SW Ave

Monday - Thursday 10:00 a.m.-7:00 p.m.

Friday 10:00 a.m.-5:00 p.m.

541-737-9969

[SOL@oregonstate.edu](mailto:SOL@oregonstate.edu)

## Social Justice Retreats

The following retreats are being offered in support of social justice work on the Oregon State University campus: Racial Aikido, Multiracial Aikido, Examining White Identity in a Multicultural World, and Examining White Identity for Faculty and Staff.

[Social Justice Retreats](#)

Brandi Douglas

[Send Email](#)

## Men's Development & Engagement

Men's Development & Engagement provides opportunities focused on engaging Oregon State's men in discussion of gender, exploring topics of masculinity in our community, and developing healthy masculine identities. MDE is committed to the development of masculine identities that are: responsible, compassionate & authentic. [Learn about the workshops and presentations offered by MDE.](#)

[Men's Development & Engagement](#)

Student Experience Center

541-737-9030

[allen.dean@oregonstate.edu](mailto:allen.dean@oregonstate.edu)

## Health and wellness

### Student Health Services (SHS)

[Student Health Services](#) provides fee-paying

students a health clinic, nutrition counseling, psychiatric services, prevention information, health insurance and more.

Student Health Services, Main Clinic

201 Plageman Building

Monday to Friday 9 a.m.-5 p.m.

Saturday 10 a.m.-3 p.m. (urgent care only)

541-737-9355

Student Health Services-Tebeau Hall same-day clinic

Monday to Friday 9 a.m.-4:30 p.m.

Urgent care unavailable

541-737-9355

[Contact SHS](#)

## Health insurance

Students with a graduate assistantship of an FTE of .2 to .49 are required to enroll in PacificSource insurance or file a waiver form with comparable insurance coverage to the Student Health Services Insurance Office.

[Check their website](#) for deadlines and more information.

International students are required to enroll in the OSU insurance plan. OSU requires that all non-resident international students and their dependents (living in the United States) be covered by health insurance. [Learn more on the](#)



[SHS website.](#)

# Counseling and Psychological Services (CAPS)

CAPS provides individual, couples, and group counseling for OSU students.

The Mind Spa at CAPS is a unique sanctuary for everyone in the OSU community where you can soothe your mind, body, and spirit. Come explore an experience like no other on campus. Relax all by yourself in this quiet single-user space, unkink that stubborn muscle in the full body massage chair, center yourself in the meditation corner, use guided relaxation software to find calmness, or sit by the therapy light on a rainy day. You do not need to be a CAPS client to use the Mind Spa, it's open to all OSU students, faculty, and staff at no charge.

CAPS mindfulness meditation sessions are free and do not require registration. [Check the schedule for day and time.](#)

[Counseling and Psychological Services \(CAPS\)](#)

500 Snell Hall

Monday to Friday 8:00 a.m.-5:00 p.m.

541-737-2131

[caps@oregonstate.edu](mailto:caps@oregonstate.edu)

## University Ombuds office

An Ombuds is a designated neutral who provides confidential and informal assistance to visitors on a variety of issues and concerns. Ombuds will help people to resolve a conflict informally. It facilitates communication between all parties to reach mutually satisfactory solutions.

### Ombuds

116 Waldo Hall

Monday - Thursday 8:30 a.m.-5:30 p.m.

Friday 9:00 a.m.-5:00 p.m.

541-737-4537

[ombuds@oregonstate.edu](mailto:ombuds@oregonstate.edu)

## Sexual Assault Support Services (SASS)

SASS offers support, safety, counseling and information about reporting options to students who seek help regarding relationship violence, stalking or any unwanted sexual violence. SASS recommends the students to download [Circle of 6](#) apps.

## Sexual Assault Support Services

500 Snell Hall

Monday - Friday 8:00 a.m.-5:00 p.m.

SASS helpline - 541-737-2131

[survivoradvocacy@oregonstate.edu](mailto:survivoradvocacy@oregonstate.edu)

# Survivor Advocacy and Resource Center

The Survivor Advocacy and Resource Center is committed to providing safe and confidential support to all university community members, including students, faculty and staff affected by different forms of violence. With the goal of empowering survivors to be able to make informed choices, the Survivor Advocacy and Resource Center will serve as a first point of contact for survivors and their allies, in order to provide needed information about their choices and their rights, referrals to desired services, and support for their right to regain control over their lives.

## Survivor Advocacy and Resource Center

311 Plageman Building

541-737-2030

[survivoradvocacy@oregonstate.edu](mailto:survivoradvocacy@oregonstate.edu)

# Human Services Resource Center (HSRC)

The [HSRC helps students](#) obtain rental assistance, food stamps, food boxes, and health insurance. Their food pantry offers emergency food to students in need. The Textbook Lending Program helps connect eligible students to free textbooks.

## [Human Services Resource Center](#)

Avery Lodge

1030 SW Madison Ave

Monday- Friday 9:00 a.m.-5 p.m.

541-737-3747

[hsrc@oregonstate.edu](mailto:hsrc@oregonstate.edu)

# Military and Veteran Resources

Military and Veteran Resources provide support to military service members, veterans, and their families studying at OSU. They help students achieve a successful learning experience. They also help the students identify the available benefits and services.

[Military and Veteran Resources](#)

Willie Elfering  
Military and Veteran Resources Advisor  
541-737-7662  
[william.elfering@oregonstate.edu](mailto:william.elfering@oregonstate.edu)

# Sports and recreation

## Recreational sports

Graduate students are allowed to use any of the [recreational facilities](#) on campus whenever they are open, including gyms, pools, courts, climbing walls and more. [Rec Sports](#) also offers a [variety of classes](#) to students for which you will need to pay a minimal fee.

The Adventure Leadership Institute, located at the Dixon Recreation Center offers [outdoor equipment rental](#) for a number of activities, including backpacking, ice climbing, mountaineering, rafting, rock climbing, bouldering and more.

[Department of Recreational Sports](#)

211 Dixon Recreation center

[Hours](#)

541-737-3748

[recservices.assist@oregonstate.edu](mailto:recservices.assist@oregonstate.edu)

# OSU intramural sports

Sports teams are a great way to socialize, de-stress, learn new skills and to get physically fit. [Find and join the sports club you love](#), take part and have fun.

# Student life

## Coalition of Graduate Employees (CGE)

The Coalition of Graduate Employees (CGE) represents the interests and rights of Oregon State University's graduate employees (Graduate Teaching and Research Assistants) through the bargaining and maintenance of a fair working contract. CGE strives to create a community of graduate employees empowered to advocate for collective issues. This is a democratically run, member-driven organization that values collective action, self or collective advocacy and social justice and equity.

[Coalition of Graduate Employees \(CGE\)](#)

101 NW 23rd Street  
Corvallis, OR 97330  
541-757-7141

## Graduate student trips

Once a term, the Graduate School sponsors a day-trip near Corvallis. Past trips have included the Oregon coast at Newport and Silver Falls State Park. Check the [Graduate School monthly newsletter online](#), or in your email, for upcoming announcements.

## Childcare and family resources

The office of Childcare and Family Resources supports all families on the Oregon State University Corvallis campus. Find many resources on their website including child care subsidies, breastfeeding/lactation room information, upcoming events, information about our free care.com membership and more.

[Childcare and Family Resources](#)

137 and 141 Snell Hall

541-737-4906

[Send Email](#)

## Graduate student clubs

The OSU Experience website maintains the [official list of student clubs](#). You can filter the list categories to “graduate students” to find clubs specifically for graduate students.

## Graduate school policies

The complete list of graduate student policies is located on the [General Catalog website](#). If you have questions about these policies please get in touch with us or come to one of our [Ask the Graduate School drop-in sessions](#) held weekly in the Graduate Student Success Center.

[Please refer to your program’s handbook for any additional requirements.](#)

## Continuous enrollment

Unless on an approved leave of absence, all graduate students in graduate degree and certificate programs must register continuously for a minimum of 3 graduate credits until their



degree or certificate is granted or until their status as a credential-seeking graduate student is terminated. [Learn more on the catalog website.](#)

## Leave of absence

On-leave status is available to students who need to suspend their program of study for a good cause. Students who desire a leave of absence will work with their major professor, program administrator, and the Graduate School to arrange authorized leave. [Learn more on the catalog website.](#)

## Program of study

The program of study helps you define your path to degree completion. You can create your program of study in collaboration with your major advisor. The Graduate School uses your program of study to determine your eligibility for exams and to complete the final audit of your course work prior to awarding your degree.

We recommend that you submit your program of study form before completion of 18 graduate

credits for a master's degree and by your fifth term for a doctoral degree. Submitting the form early allows time for the Graduate School to advise you on university requirements and for you to make adjustments should your plans or course offerings change. [Learn more.](#)

## Graduate committee and GCR

Your graduate committee guides your course work and research and serves as your final examining committee. Your major professor serves as committee chair for any meetings. If it becomes necessary to replace one of your committee members after your committee has been established or to substitute a committee member for a particular meeting, refer to your committee composition requirements. [Learn more.](#)

## Scheduling your required exams

As required by the Graduate School, master's degree students and doctoral degree students must pass certain examinations to be awarded a degree. You must contact members of your

committee to arrange the date, time and place of the exam. The first part of the exam is the thesis or dissertation defense, a presentation which may be open to all interested parties. After the defense portion, the examination committee excludes all other persons and continues examining your knowledge of your field. Alternative assessments for non-thesis master's programs are available after fall 2016. [Learn more.](#)

## Student conduct code

Academic or scholarly dishonesty is defined as an act of deception in which a student seeks to claim credit for work or effort of another person, or unauthorized materials or fabricated information in any academic work or research, either through the student's efforts or the efforts of another. It includes cheating, fabrication, assisting, tampering and plagiarism.

All students are expected to download the Academic misconduct information guide and follow the [student conduct code](#) of Oregon State University.

[Student Conduct and Community Standards](#)

150 Snell Hall

Monday -Friday 8:00 a.m.- 5:00 p.m.

541-737-3656

[sccs@oregonstate.edu](mailto:sccs@oregonstate.edu)



Join us on Facebook



@osugradsuccess



Our GradSuccess blog brings you articles from students, faculty and leadership. [blogs.oregonstate.edu/gradsuccess](https://blogs.oregonstate.edu/gradsuccess)



The GradSuccess - FTW newsletter delivers a weekly collection of articles and events to your inbox. Sign up at [bit.ly/gradsuccess-ftw](https://bit.ly/gradsuccess-ftw)



Graduate  
Student  
Success  
Center

Oregon State **OSU** Graduate School  
UNIVERSITY

Graduate School  
A300 Kerr Administration Building  
541-737-4881  
[gradstudentsuccess@oregonstate.edu](mailto:gradstudentsuccess@oregonstate.edu)

Graduate Student Success Center  
Memorial Union (MU) 203  
541-737-1693  
[GSSC@oregonstate.edu](mailto:GSSC@oregonstate.edu)